

Principal's Message

It has been wonderful to see so many parents/caregivers connecting with children and their teachers over the past few weeks during 3 Way Conferences. **Approximately 200 conferences** with families and children were conducted. Some were also conducted over the phone.

Thankyou to all our teaching staff who remain committed and dedicated to improving learning outcomes for Alberton children and for investing so much time and energy into this process. It's one of many ways we can work together in strong partnership to advance a child's learning journey.

When we establish and maintain positive relationships and develop connectedness within the community many great outcomes can be achieved. Many studies show that social connectedness generates a positive feedback loop of social, emotional and physical well-being. Schools are wonderful places to create this ethos and Alberton PS does it better than most.

School Tour: Preschool and School

School Tour dates and times are as follows:

TERM 3:

Tuesday 30th August 2022 9am–10am. Our student leaders will conduct the tours, along with the Principal.

TERM 4:

Tuesday 8th Nov 2022 9am–10am. Our student leaders will conduct the tours, along with the Principal.

For any further information, please contact Lauren Black, Enrolment Officer on 8447 1924 or dl.0202.admin@schools.sa.edu.au

Progressive Achievement Tests in Reading and Mathematics (PAT-R & PAT-M)

It is approaching the time of year when children participate in PAT Assessment across South Australia. These tests are an annual assessment, used by teachers, for informing planning for learning. They are used in a diagnostic manner to identify where a child is at in learning and what growth we have seen over 12 months. This information about a child's progress in reading and mathematics helps to inform learning goals for the future. Opportunities for all children to engage in this assessment will occur in the second half of Term 3. Please feel free to talk with your child's teacher if you have any further queries.

New Function on School Website:

If you haven't checked it out.....go to the link and view the new function on the website!!

A new 'reporting student absences' function has been added to the school website. Save it to your favourites and hope it makes it a little easier to communicate an explanation for your child's absence when needed.

Please check this out at <https://albertonps.sa.edu.au>

Governing Council News:

Due to family, work and personal commitments we have had a few resignations from the Governing Council and would like to acknowledge these members of our community. Thank you to **Michelle, Jasmine and Melissa** for all of your contributions not only for this year, but previous years on GC. Your insights, advice, time and energy in helping to shape the work of Governing Council and support of the school has been valued and appreciated by all.

If you didn't get the opportunity or missed the AGM to nominate or think you would like to be join Governing Council, please register your nomination by Friday 2nd September 2022 by emailing Lauren Black, Front Office Manager at lauren.black582@schools.sa.edu.au

Diary Dates

August

Book Week Celebration

Mon 22/08 – Thurs 25/08

Footsteps Program

Week of 22/08

Student Free day

Trauma Informed PD
Fri 26/08

School Tour

Tues 30/08
9am - 10am

Invacuation Drill

Wed 31/08
11:25am

September

Aboriginal Parent Partnership Mtg

Tues 06/09
2pm-3pm Rosey's Room

2022 School Terms

TERM 3

25th July – 30th September

TERM 4

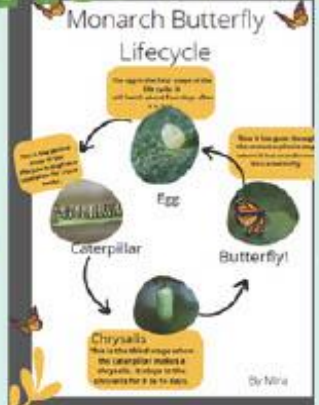
17th Oct – 16th Dec

TERM 3

Life Science and Sustainability



Students are learning about how native butterflies interact with the environment in our garden and grow within a lifecycle. Fantastic use of high-level vocabulary including metamorphosis, pupa, entomology, proboscis and chrysalis. Students are looking forward to learning about adaptations and native plants with Rebecca Mumford in Gardening in Week 6.



Environments ministry!



Environment Ministry has finished bottling the first press of APS Olive Oil. Watch out for forms going home soon! Be quick before they sell out as there are only 32 bottles!!!



Cook n Create



I'm back again this term teaching the amazing Alberton kiddies as part of 'Life science and sustainability' curriculum. We have been focused on cooking using Native ingredients - how lucky are we to have lots of Pig face and Warrigle in abundance in the amazing school gardens! As ever, the children have been so excited to use their amazing and ever growing skills and try new foods!



News from The Nest

The Nest children attended the Patch Theatre to see a performance called 'Home'. It was an amazing mixture of light, sounds and creativity. Some of our children were fortunate enough to be chosen as participants in the show. A wonderful day out for all!



Nest Enrolment – Mid Year Intake Information

Recently there has been changes to the enrolment policy in public education, and schools and preschools will be offering a mid year intake in Term 3. The mid year intake process will begin in 2023 for preschools and in 2024 for schools.

Outlined below is some general information that can help guide families with how and when the new policy will be implemented and the impact for their child/ren. We know that decisions regarding enrolment can be challenging and there may be many questions about the changes. Your child's individual needs and development should be considered when making decisions.

We are fortunate at Alberton to have The Nest which is an inclusive preschool and reception program and we provide a high quality early years program, that provides varied and smooth transition points, while maintaining continuity for children.

If you have further questions about the enrolment process or need support to decide the most suitable option for your child please contact Briony Murdoch at briony.murdoch535@schools.sa.edu.au to discuss further.

Preschool Mid-Year Intake Information - Starts 2023

Children are entitled to access 4 terms (1 year) of government preschool in the year before they start school.

We are introducing a mid-year intake into preschool. This means that from 2023 children who turn 4 years old:

- before 1 May are eligible to start preschool at the beginning of the year.
- on 1 May to 31 October can commence preschool through the mid-year intake at the start of term 3 of that year.

Regardless of whether your child starts at the beginning of the year, or through a mid-year intake they will undertake 4 terms of preschool. **Children who turn 4 years after 31 October will be eligible to commence preschool at the start of the following year.**

Reception Mid-year Intake Information - Starts 2024

From 2024 there will be a mid-year intake into school (reception).

From 2024, if your child turns 5 years between 1 May and 31 October, they can start reception in either:

- term 3 of the same year or
- term 1 the following year.

Students enrolled through a mid-year intake will complete 6 terms of reception.

The enrolment process for 2023 is underway, and we encourage any family who has not yet submitted a register of interest for 2023 to contact Lauren Black on 8447 1924 as soon as possible. Registrations of interest for 2023 mid year preschool intake are open, however offers of mid year enrolments will not be sent to families until next year (2023)

Governing Council Report

Welcome to Term 3, just a small note from Governing Council as we move into the second half of the year.

It is great to see so many families and students about the school (weather permitting), all smiling and enjoying their surroundings. Happy students make for Happy Learners!

Even though there is a lot of positive news about the school we have seen the challenges that Dan and staff are continuing to have on a day-to-day basis, covering staff absentees due to illness and the impact of COVID. The flexibility the staff have offered in making sure the students have been able to continue with their lessons without too many disruptions is a credit to the team environment the leadership group has developed. They (staff) should be congratulated on their efforts in just making it happen.

We have heard some great reports on the canteen specials and encourage everyone to enjoy these options if able to do so. Governing Council also heard from our student leaders at the last Governing Council meeting, Ella and Jackson who spoke confidently and were excited about all the things students were getting involved in.

Due to family, work and personal commitments we have had a few resignations from the Governing Council and would like to acknowledge these members of our community. Thank you to **Michelle, Jasmine and Melissa** for all of your contributions not only for this year, but previous years on GC. Your insights, advice, time and energy in helping to shape the work of Governing Council and support of the school has been valued and appreciated by all.

Governing Council would like to call for nominations for the remainder of the school year to fill these roles. So, if you didn't get the opportunity or missed the AGM to nominate or think you would like to be involved, please register your nomination by Friday 2nd September 2022 by emailing Lauren Black, Front Office Manager at lauren.black582@schools.sa.edu.au

Hopefully the weather is kind and we can get as many people to the pizza and movie night this Friday 19th August 2022.

Kind Regards

Steve Halls - Governing Council Chairperson

Stay Connected

+ (08) 8447 1924

<https://albertonps.sa.edu.au/>

dl.0202.admin@schools.sa.edu.au

Facebook:
<https://www.facebook.com/Alberton-Primary-School-702081429902529>

Parent Facebook Group:
"Alberton Primary School Families- 2021 and Beyond"
<https://www.facebook.com/groups/499436127691808>

Community Promotions



Port Adelaide Athletics Club
ABORIGINAL ATHLETICS SQUAD

FUN & FREE
Free Uniform
Free Membership
No additional costs

Ages: 9 - 19 Years
Wednesdays
5:00 - 6:00pm

Run, Jump & Throw!

Starts Wednesday
7th September 2022

CONTACT: Kathy Nelson 0400 653 777 | Lele Sanderson 0434 161 421
Iverson Athletic Reserve - Langham Place, Port Adelaide

SARAH GHD ATCO